

# Welcome to Lairdsland Primary's Induction



A parent/guardian information presentation.



# Primary/Nursery Transition Programme 2025

- **From WB 28<sup>th</sup> April** – School staff visit children in nursery setting
- **Monday 19<sup>th</sup> May** – Primary 1 Induction Event
- **Thursday 29<sup>th</sup> May 9:30-10:30** – Visit
- **Wednesday 4<sup>th</sup> June, 1:30-2:30** – Visit
- **Thursday 12<sup>th</sup> June, 11:30-12:30** – Primary 1 Lunch Experience
- **Tuesday 17<sup>th</sup> June, 9:30-10:30** – Visit
- **Monday 23<sup>rd</sup> June, 1:3-2:30** – Annual Class Swap Day





# Primary 1 Teachers



Mrs Gourlay  
Primary 1a



Mrs McLoone & Mrs Martin  
Primary 1b





# Other staff members



Mrs Davidson  
Interim Head Teacher



Mrs Donaghey  
Head Teacher



Mrs Bradford  
Depute Head Teacher



Mrs Kerr  
Depute Head Teacher



Mrs Paterson  
Principal Teacher



Mrs Greer  
Acting Principal Teacher



Mrs Duffy  
Principal Teacher



Miss Quail  
Family Learning  
Assistant







# School Routines



## 9am School Starts

(\*Please note that doors open at 8.55am and remain open until 9:05am)



Primary 1a line up here.

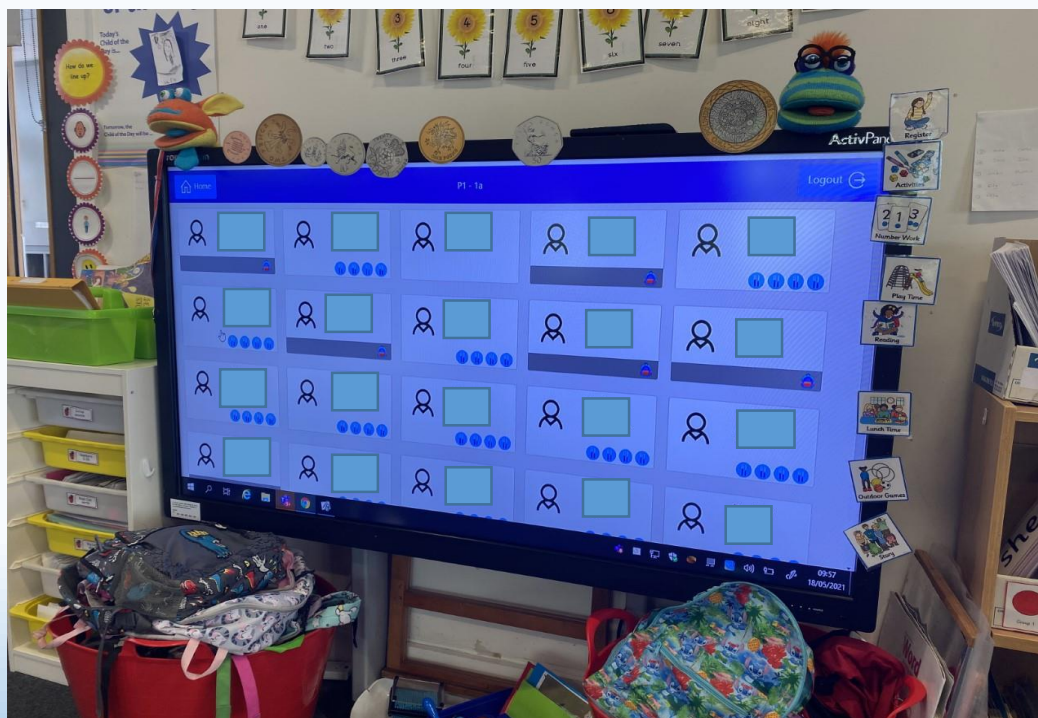


Primary 1b line up here.



# School Routines

## Electronic Self-Registration



- Your child will select their name at the start of each day and choose their lunch. This will be supported by an adult. You can choose to select your child's lunch at home using the cashless catering system if you wish.
- Children who are not in are marked "absent" by an adult and this information is sent to the office. The office staff will phone you if we were not expecting your child to be absent.



# School Routines



10:30-10:45am Playtime





# School Routines

## 12:00-12:45 Infant Lunch Time

- Split Lunches – Upper school 12:15-1:00pm
- Free Lunch for all P1 – P5 Pupils
- Cashless Catering System
- Pupils register what they are doing for lunch at the start of the school day
- Primary 1 children collect their lunch and eat in the dinner hall with their class. They are supported by their classroom assistants.
- Children can bring a packed lunch if they prefer. These are also eaten in the dinner hall.







# School Routines



## 3pm Home Time

Gates open at 2.55pm for parents/carers to enter playground. We will only allow your child to leave with an adult they know and can tell us about. Please bear with us while we learn who their important people are.





# Safety & Security



- Playground gates are opened at 8:30am. Management supervise the gates from 8:50-9:05.
- Entry to the school by adults must be via the School Office.
- Medicines should be given to the School Office, where a permission form for medicines to be administered in school will need to be completed.
- Trained first aiders
- If your child is going to be absent, please inform the school office. If a child we expect to be present is not, we will contact you.
- Supervision in the playground by support staff and Management.





# Attendance, Absences & Late Coming

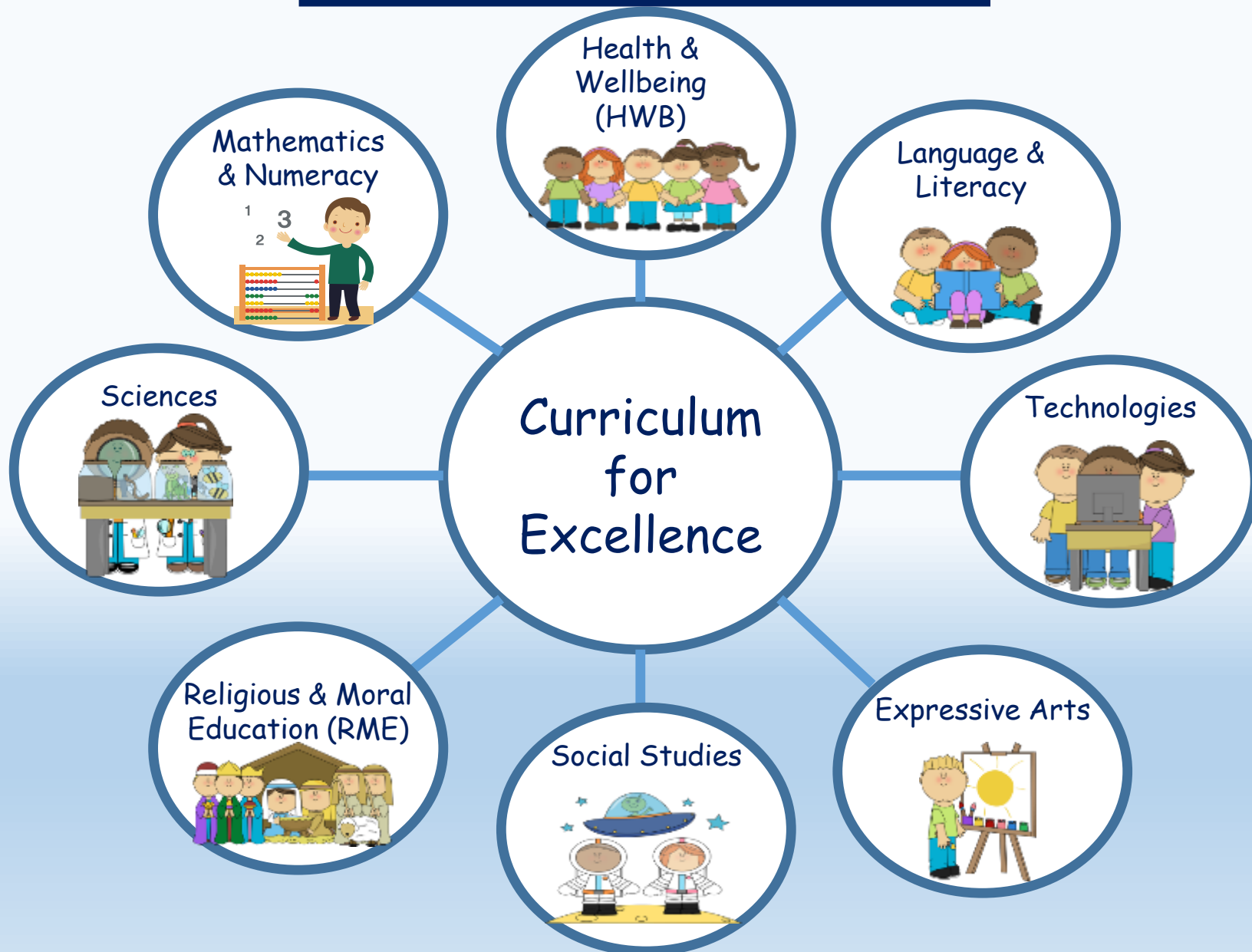


- If your child is going to be **late (arrive after 9:05)** or **absent**, please inform the school office by phone call, Parents Portal or email **before 9:30am**. If your child is late they will be required to enter via the office.
- If your child requires to attend an appointment during the school day, advanced notice is required to the school office by email.
- Children who are not in will be marked absent. The office staff will contact you if we were not expecting your child to be absent.
- In line with EDC policy, term time holidays are not authorised.





# Curriculum



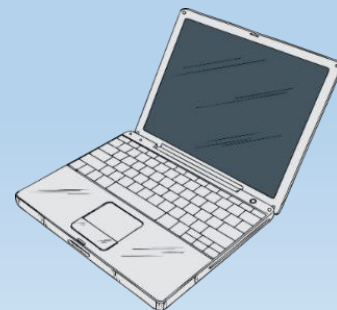




# Learning



- Mixture of Play2Learn, Star Tasks (independent learning activities) and teacher led tasks
- Children will be grouped to enable teachers to effectively teach lessons at the correct level to suit each child
- Teacher led tasks generally are completed in small groups whilst the rest of the class play or complete star tasks
- Homework and reading will be assigned and sent home weekly . Your child will be given login details for some online platforms when they start school.





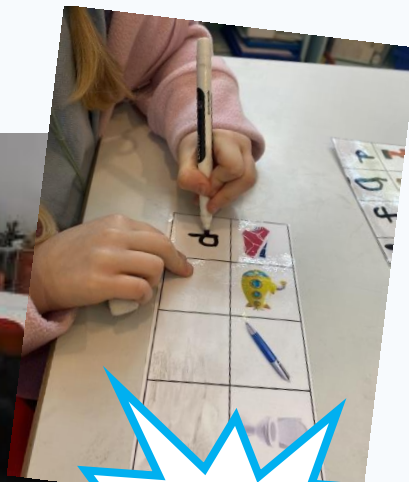
# A busy day in Primary 1



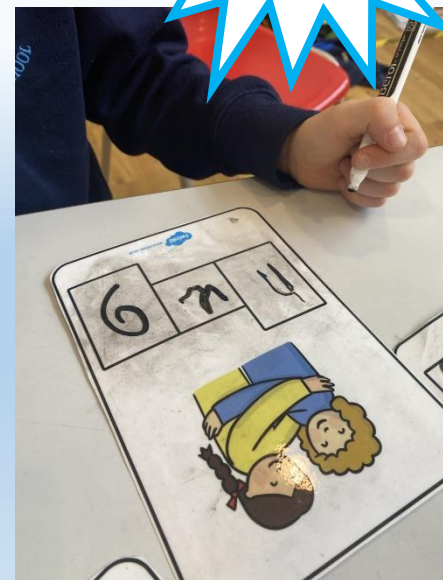
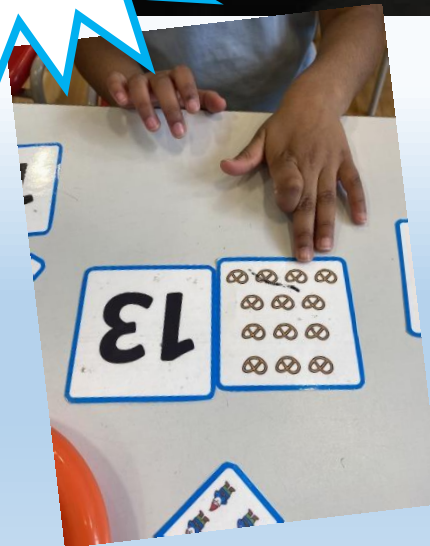
Play2Learn



Teacher Led



Star Tasks





# School Uniform & PE Kits



- Shirt & Tie or Polo shirt
- Trousers / Skirt / Pinafore
- Navy jumper / cardigan
- School Blazer
- School Fleece (optional)
- Black or navy shoes (please consider Velcro if your child cannot independently tie shoelaces)
- Polo shirt or plain t-shirt
- Shorts/leggings/jogging trousers
- Indoor shoes (preferably without laces)







# We are a Rights Respecting School

- Each class creates a “Class Charter” at the start of the school year. This is a set of rules that all children agree to follow.
- We have “Hot chocolate Fridays” to promote our school values. Children are nominated by each other and by staff if they are seen to be demonstrating our values.
- Each class has a Star Award winner every Friday.
- We have a House Points system. Your child will be allocated a house team.
- School Assemblies
- Special Achievements are celebrated, please let use know if your child has achieved something spectacular so we can celebrate with them!







# Reporting Progress



- Parent Teacher Meetings
- Seesaw
- Progress Reports
- Homework Folders



# Home School Partnership



- Newsletters
- Homework Folders
- Email/Text
- School Website
- SeeSaw
- Parent Council – Nigel Rooke
- P.T.A – Coylah Entwistle
- Family Learning Assistant – Kelly Quail





# 1<sup>st</sup> Day of School

Thursday 14<sup>th</sup> August 2025

9.30am – 2:30pm



**\*Further information provided in Parent Pack which will be distributed at the end of presentation.**



# Any Questions?

