

Welcome to Lairdsland Primary's Induction



A parent/guardian information presentation.



Primary/Nursery Transition



1st Visit

WB 17th April 2023

- Primary 1 teachers visited children in their nursery settings.

2nd Visit

WB 8th May 2023

- Nursery Group visits – Most children came up with their nursery to experience the primary 1 classroom.

3rd Visit

1st June 2023

- Primary 1 induction afternoon

4th Visit

21st June 2023 1:30-2:30pm

- New P1s invited to spend 1 hour with their new classmates and teacher.

October 2023

- Parent Visits
(1/2 hour session)
- Nursery Staff Visit



Primary 1 Teachers



Mrs McLoone & Mrs Martin
Primary 1a



Mrs Gourlay
Primary 1b





Other staff members



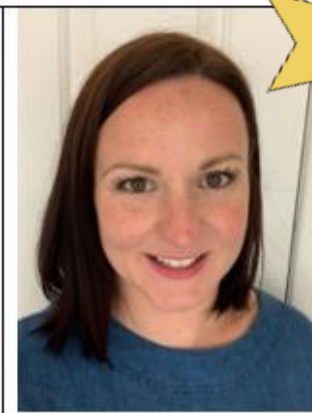
Mrs Donaghey
Head Teacher



Mrs Bradford
Depute Head Teacher



Mrs Kerr
Depute Head Teacher



Mrs Paterson
Principal Teacher



Mrs Greer
Principal Teacher



Mrs Duffy
Principal Teacher



Miss Quail
Family Learning
Assistant



School Routines



9am School Starts

(*Please note that doors open at 8.55am and remain open until 9:05am)



Primary 1a line up here.

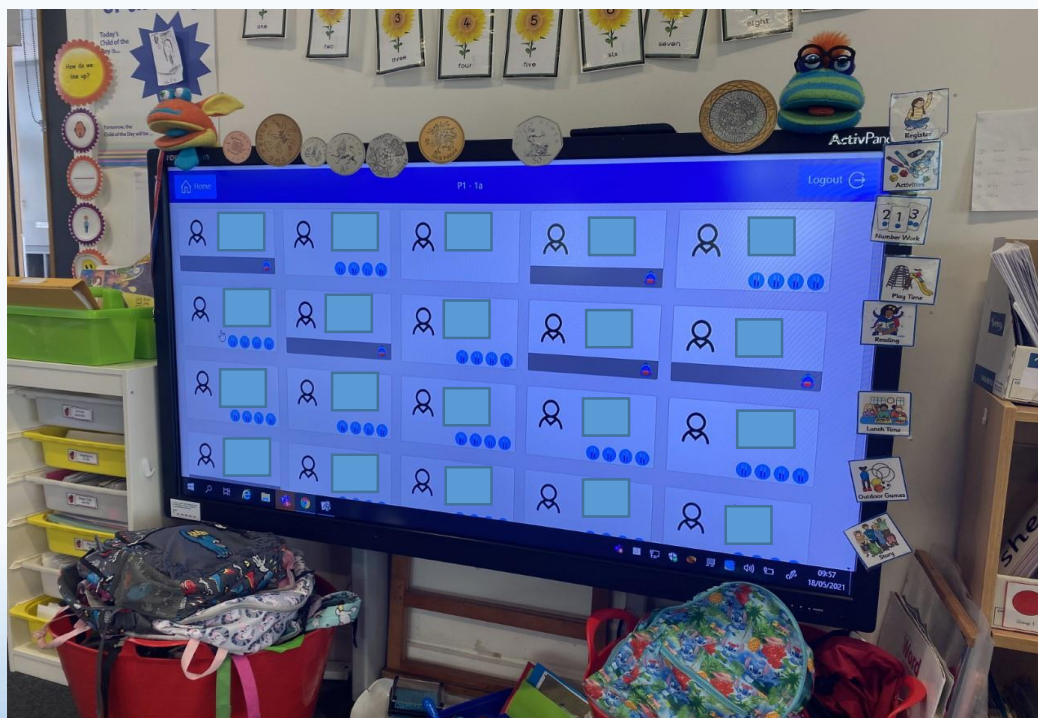


Primary 1b line up here.



School Routines

Electronic Self-Registration



- Your child will select their name at the start of each day and choose their lunch. This will be supported by an adult. You can choose to select your child's lunch at home using the cashless catering system if you wish.
- Children who are not in are marked "absent" by an adult and this information is sent to the office. The office staff will phone you if we were not expecting your child to be absent.



School Routines



10:30-10:45am Playtime



School Routines



12:00-12:45 Infant Lunch Time

- Split Lunches – Upper school 12:30-1:15pm
- Free Lunch for all P1 – P5 Pupils
- Cashless Catering System
- Pupils register what they are doing for lunch at the start of the school day
- Primary 1 children collect their lunch and eat in the dinner hall with their class. They are supported by their Classroom assistants.
- Children can bring a packed lunch if they prefer. These are also eaten in the dinner hall.





School Routines



3pm Home Time

Gates open at 2.55pm for parents/carers to enter playground. We will only allow your child to leave with an adult they know and can tell us about. Please bear with us while we learn who their important people are.





Safety & Security



- Playground gates are opened at 8:30am. Management supervise the gates from 8:50-9:05.
- Entry to the school by adults must be via the School Office.
- Medicines should be given to the School Office, where a permission form for medicines to be administered in school will need to be completed.
- Trained first aiders
- If your child is going to be absent, please inform the school office. If a child we expect to be present is not, we will contact you.
- Supervision in the playground by support staff and Management.





Attendance, Absences & Late Coming

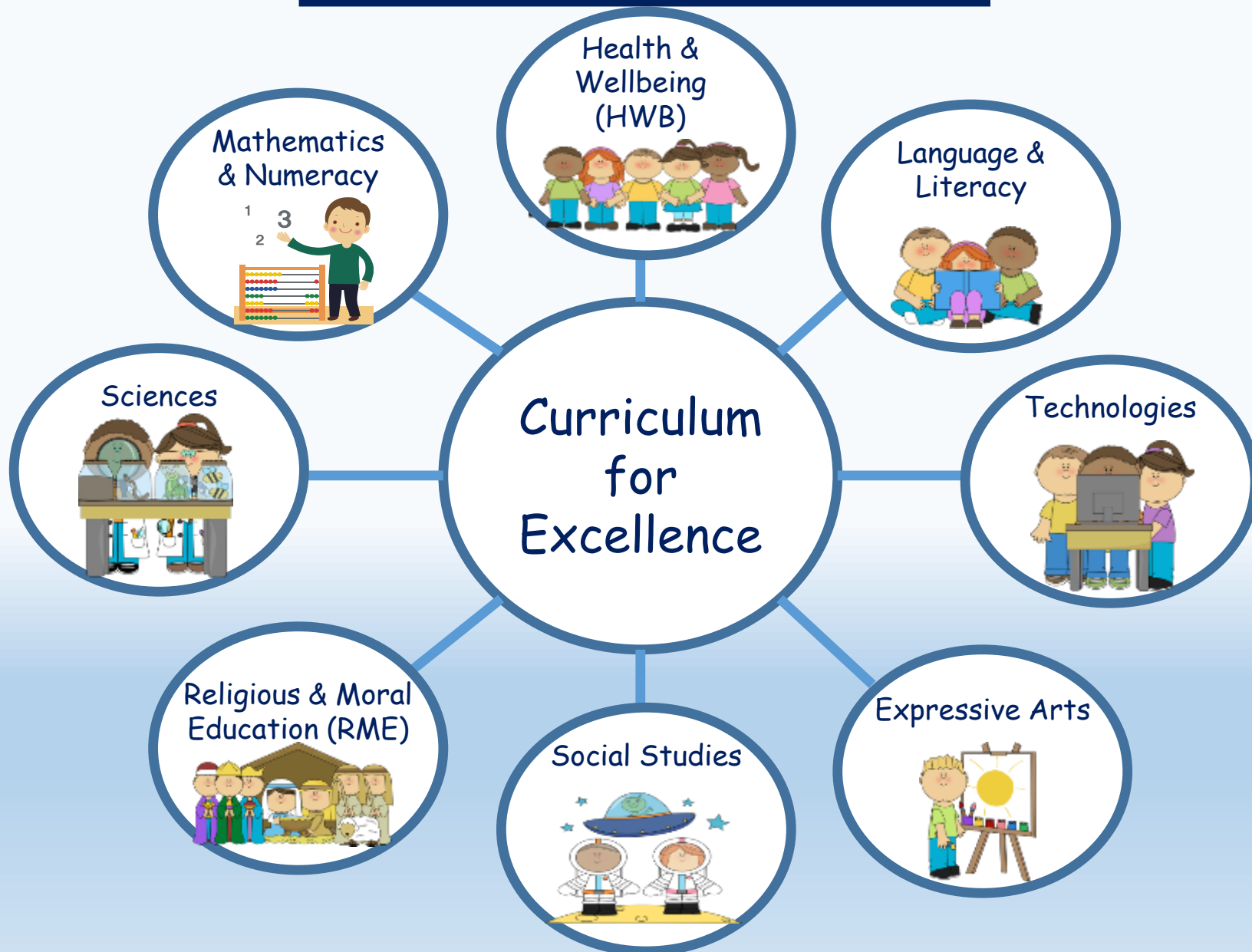


- If your child is going to be late (arrive after 9:05) or absent, please inform the school office by phone call or email **before 9:30am**. If your child is late they will be required to enter via the office.
- If your child requires to attend an appointment during the school day, advanced notice is required to the school office by email.
- Children who are not in will be marked absent. The office staff will contact you if we were not expecting your child to be absent.
- In line with EDC policy, term time holidays are not authorised.





Curriculum





Learning



- Mixture of Play2Learn, Star Tasks (independent learning activities) and teacher led tasks
- Children may be grouped to enable teachers to effectively teach lessons at the correct level to suit each child
- Children have an assigned teacher but may be taught by either of the primary 1 teachers, depending on the task
- Teacher led tasks generally are completed in small groups whilst the rest of the Class play or Complete star tasks
- Homework and reading will be assigned and sent home weekly . Your child will be given login details for some online platforms when they start school.





A busy day in Primary 1



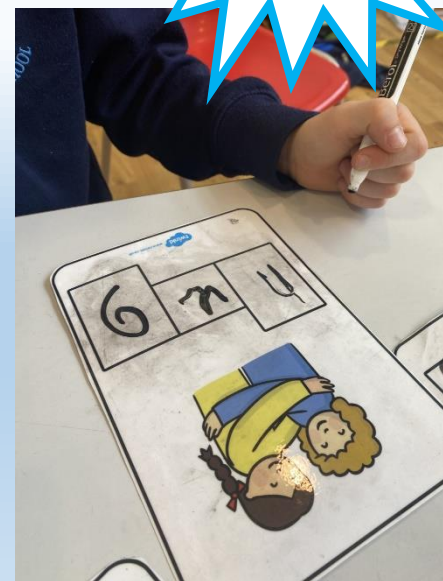
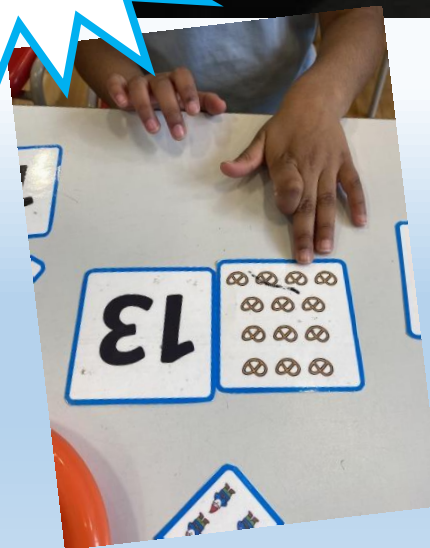
Play2Learn



Teacher Led



Star Tasks





Buddies



Every child has been allocated a primary 6 buddy, who they will meet in their first couple of weeks at school.

Over the course of the year, children have an opportunity to play and complete activities with their buddies.





School Uniform & PE Kits



- Shirt & Tie or Polo shirt
- Trousers / Skirt / Pinafore
- Navy jumper / Cardigan
- School Blazer
- School Fleece (optional)
- Black or navy shoes (please consider Velcro if your child cannot independently tie shoelaces)



PE Kits

- Polo shirt or plain t-shirt
- Shorts/leggings/jogging trousers
- Indoor shoes (preferably without laces)





We are a Rights Respecting School

- Each Class creates a “Class Charter” at the start of the school year. This is a set of rules that all children agree to follow.
- We have “Hot chocolate Fridays” to promote our school values. Children are nominated by each other and by staff if they are seen to be demonstrating our values.
- We have a House Points system. Your child will be allocated a house team.
- School Assemblies
- Special Achievements are celebrated,

please let use know if your child has achieved something spectacular so we can celebrate with them!





Reporting Progress



- Parent Teacher Meetings
- Seesaw
- Progress Reports
- Homework Folders
- Phone calls / Informal Meetings



Home School Partnership



- Newsletters
- Homework Folders
- Email/Text
- School Website
- School Twitter Account
- Parent Council – Nigel Rooke
- P.T.A – Coylah Entwistle
- Family Learning Assistant – Kelly Quail





1st Day of School

Wednesday 16th August 2023

9.30am – 2:30pm



***Further information provided in Parent Pack which will be distributed at the end of presentation.**



Any Questions?

